



SUPERSOFT ScribeMagic

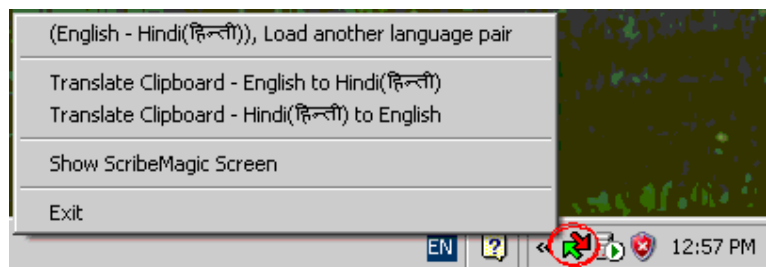
Software for breaking the language barriers through Unicode.

ScribeMagic is language independent word by word translation/transliteration software for all the languages that follows Unicode coding system. The translation is based on editable lookup dictionaries. At present this software has translation/transliteration dictionaries for English-Malayalam, English-Hindi and Malayalam-Hindi. With the help of these dictionaries you can translate between English, Malayalam and Hindi. The translation/transliteration is not limited between English, Malayalam and Hindi. You can create your own lookup dictionaries with the help of the lookup dictionary editor according to your need. You can add the translation dictionary of your own language and translate the words in any database to your native language and from your native language to any other languages.

These lookup have two columns, right language and left language columns. For translation and transliteration, first it will search the dictionary for the matching word and replace it with the destination language word. In the absence of matching word it will break the source word into character clusters and searches the dictionary with that and replace that with the matching character clusters of destination language one by one. If it can't locate matching character cluster it will break the cluster again into smaller pieces and search for matching characters. At last, in the absence of character clusters it will transliterate character by character. In case of translation/transliteration error you can edit the lookup easily, because all these operations, source, destination language pans and lookup editor are synchronized in a single window.

This software can translate several millions of database such as voters list, the Telephone directory, Name lists etc. currently in English language to Indian languages in few hours. This will accelerate the adoption of universally accepted Unicode coding standard in Indian language computing because; these translations are in Unicode format. The User interface of this software is very simple, because all objects such as lookup dictionary editor and source and destination language for translation is implemented in a single.

Whenever you open Scribe Magic it will launch in the system tray of your computer and load the most recently used language pair in to its lookup dictionary. Right click on the system tray icon of ScribeMagic to get the translation menu as follows. The language pair in the menu caption is English-Hindi. This menu caption will change dynamically depends on the languages in the ScribeMagic's lookup dictionary.



With the help of, just the first three menu options given above you can perform the translation magic. The screen shots of the magic before and after in an MS Excel work sheet is shown in the next page of this document. Please refer the topic "Quick Start Tutorial" of ScribeMagic helps to learn the steps of this magic.

The fourth option of the above menu will display the full screen of ScribeMagic with three pans. The Lookup pan, Left language pan and Right language pan. This is shown in the last page of this document.

N.B.: The English-Malayalam and Malayalam-Hindi dictionaries are created manually; thus, that is correct. But the English-Hindi dictionary may have errors. Since, English-Hindi dictionary was created mechanically by transliterating the Malayalam column of English-Malayalam dictionary with the help of Malayalam-Hindi dictionary under 'ScribeMagic'. i.e. **English-Malayalam** >> Transliterated to **English-Hindi** with the help of **Malayalam-Hindi** dictionary

Screen shouts of the magic in MS Excel

Before the Magic

Microsoft Excel - ScribeMagic1

File Edit View Insert Format Tools
Data Window Help Acrobat

A1 NAME

	A	B	C
1	NAME		
2	ARCHANA.A.S.		
3	PARVATHI		
4	PRANAVYA.V.G.		
5	BALAKRISHNAN. A		
6	MINI.V.S.		
7	GAYATRI.K.R.		
8	J. ASHOK KUMAR		
9	SUDHEESAN		
10	SUSAN VARUGHESE		
11	Week		
12	Sunday		
13	Monday		
14	Tuesday		
15	Month		
16	January		
17	February		
18	March		
19	April		
20	May		

Sheet1 Sheet2

NUM

After the Magic

Microsoft Excel - ScribeMagic1

File Edit View Insert Format Tools Data Window Help Acrobat

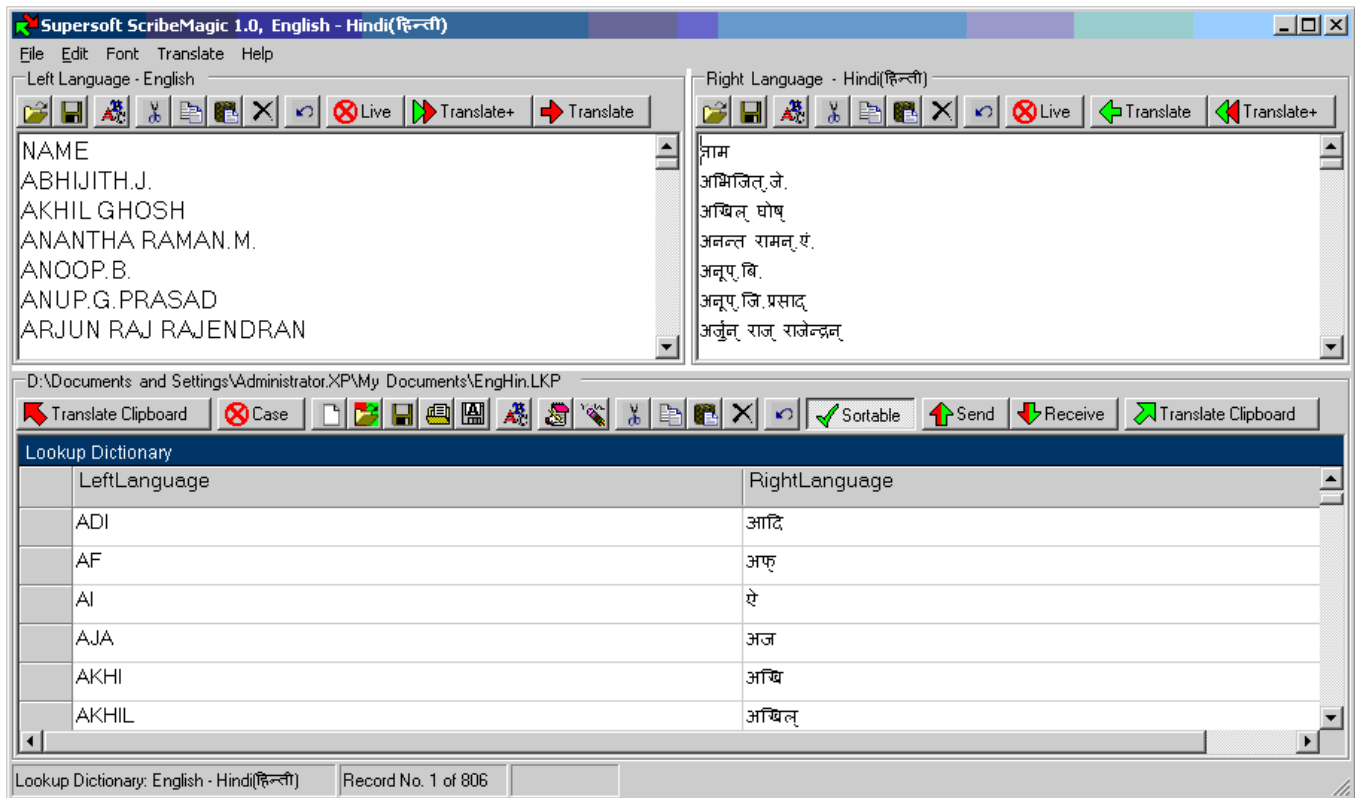
C2 അർച്ചന.എസ്.

	A	B	C
1	NAME	പേര്	നാമ
2	ARCHANA.A.S.	അർച്ചന.എസ്.	അർച്ചന.എസ്.
3	PARVATHI	പാർവതി	പാർവതി
4	PRANAVYA.V.G.	പ്രണവ്യാ.വി.ജി.	പ്രണവ്യാ.വി.ജി.
5	BALAKRISHNAN. A	ബാലകൃഷ്ണൻ. എ	ബാലകൃഷ്ണൻ. എ
6	MINI.V.S.	മിനി.വി.എസ്.	മിനി.വി.എസ്.
7	GAYATRI.K.R.	ഗായത്രി.കെ.ആർ.	ഗായത്രി.കെ.ആർ.
8	J. ASHOK KUMAR	ജെ. അശോക് കുമാർ	ജെ. അശോക് കുമാർ
9	SUDHEESAN	സുധീശൻ	സുധീശൻ
10	SUSAN VARUGHESE	സൂസൻ വർഗീസ്	സൂസൻ വർഗീസ്
11	Week	ആഴ്ച	വാർഷികം
12	Sunday	ഞായറാഴ്ച	രവീവാരം
13	Monday	തിങ്കളാഴ്ച	സോമവാരം
14	Tuesday	ചൊവ്വാഴ്ച	മംഗലവാരം
15	Month	മാസം	മഹിന
16	January	ജനുവരി	ജനുവരി
17	February	ഫെബ്രുവരി	ഫെബ്രുവരി
18	March	മാർച്ച്	മാർച്ച്
19	April	ഏപ്രിൽ	ഏപ്രിൽ
20	May	മെയ്	മെയ്

Sheet1 Sheet2 Sheet3

Ready NUM

Screen shouts of ScribeMagic window.



ScribeMagic's System requirements

- Microsoft Windows XP with service pack 2
- Microsoft .NET Framework version 1.1